



# WHITE CAP®

800.944.8322 | WhiteCap.com

# HURRICANE READINESS & RESPONSE



## Are You Prepared?

It's never too early to make a solid storm plan and train your crew on how to protect a jobsite from hurricane-force winds and rain. Our in-depth articles are designed to help contractors make the best decisions, including helpful tips on jobsite applications.



### HEAT STRESS COMPLIANCE TRAINING IN A BOX

All printed materials come in Spanish and English

**Includes:** 18PR – heat stress responder, heat stress construction poster, heat stress poster, heat stress training guide, heat stress hand outs, heat stress checklist

444BR12536



### CLASS B FIRST AID KIT

ANSI/ISEA Z308.1-2021 Compliant

444BR12639B



### PURIFIED BOTTLED WATER

24-pack of 16.9 ounce bottles



**ASK US ABOUT  
PALLET AND  
TRUCKLOAD  
PRICING!**

342PRLNIA05L24



### CUP DISPENSERS

For Igloo® coolers



### INDUSTRIAL WATER COOLERS

Rugged and durable



OTHER SIZES AVAILABLE

### WORKMAN® 50 QT. COOLER

Cool Riser Technology® elevated design improves cooling performance



21800050198



PRODUCT NO.	DESCRIPTION
1048242	4-4.5 OZ. CUP DISPENSER
1044BR20500	4 OZ. PAPER CONE CUPS, 200/SLEEVE

PRODUCT NO.	DESCRIPTION
104PL5	5GAL WHITE CAP COOLER IGLOO
104PL10	10GAL WHITE CAP COOLER IGLOO

### RAINWEAR SET

ANSI 107 Type R, Class 3 compliant jacket and ANSI 107, Class E compliant pants

**Includes:** Jacket and pants

121RW110LXL

AVAILABLE IN  
S/M - 4X/5X



### OVERTIME

Electrolyte replacement for maximum hydration, 2.5 gallon

104POUCHFP



### OVERTIME SHOTZ

Single serve electrolyte replacement for maximum hydration, 50/pack

10450PKSSFP



### PVC-POLY 3-PIECE RAINSUIT

With reflective tape and piping for extra visibility

2234338XL

AVAILABLE IN  
S/M - 4X/5X



### RMU 8 CHANNEL TWO-WAY PORTABLE RADIO (UHF) WITH DISPLAY

Coverage up to 250,000 sq. ft., 20 floors

344RMU2080D



### RDU 10/16 CHANNEL TWO-WAY RADIO (UHF)

Coverage up to 350,000 sq. ft., 30 floors

344RDU4160D



### USB RECHARGEABLE PIVOTING FLASHLIGHT

Three light output modes

**Includes:** (1) 2' braided micro-USB cable, (1) REDLITHIUM™ USB battery

131211321



### PROCELL® AA ALKALINE BATTERY 24/PK

Reliable long-lasting power vs. prior Procell® Alkaline batteries

309PC1500



OTHER TYPES AVAILABLE

Pricing subject to change. Contact your White Cap Account Manager for current pricing. White Cap is not responsible for errors or omissions. Pictures may not represent advertised items. White Cap reserves the right of resale and the amount of items sold.



# WHITE CAP®



# PREPARE

## PREMIUM BRILLIANT SERIES® RAINWEAR JACKET

ANSI 107 Type R,  
Class 3 compliant

121RWJ112LXL

AVAILABLE IN  
S/M - 4X/5X



**KISHIGO**

## PREMIUM BLACK SERIES® RAINWEAR

ANSI 107 Type R, Class 3 compliant

Includes: Waterproof front zipper, adjustable wrist cuffs

PREMIUM  
BLACK SERIES

AVAILABLE IN  
S/M - 4X/5X,  
PANTS AND  
JACKET SOLD  
SEPARATELY



PRODUCT NO.	DESCRIPTION
121RWJ106LXL	JACKET
121RWP106LXL	PANTS

## STORM STOPPER PRO RAINWEAR

ANSI 107 Type R, Class 3 compliant

AVAILABLE IN  
S/M - 4X/5X,  
PANTS AND  
JACKET SOLD  
SEPARATELY



PRODUCT NO.	DESCRIPTION
121RWJ100LXL	JACKET
121RWP100LXL	PANTS

## STORM STOPPER RAINWEAR JACKET

Comfortable, high quality waterproof  
material, ANSI 107 | Class 3

1219665JLXL

AVAILABLE IN  
S/M - 4X/5X



## STORM STOPPER RAINWEAR BIB

Comfortable, high quality  
waterproof material

1219665PLXL

AVAILABLE IN  
S/M - 4X/5X



## 2500 WATT INVERTER GENERATOR WITH CO DETECTOR

104GEN2500IMM1



**Mi-T-M**

## GEN-6000-OMMO 6000 WATT GASOLINE CHOREMASTER® SERIES GENERATOR

74 dB at 7m (75% load), 6.5 hr runtime at  
full load, 6.6 gal. fuel capacity, 389cc OHV

104GEN6000OM



## 100' LIGHTED ENDS U-GROUND EXTENSION CORD

Extra heavy capacity, 10/3, SJTW jacket

135EC511935

OTHER  
LENGTHS  
AVAILABLE



**PRIME**  
Wire and Cable

## 2' TRIPLE TAP ADAPTER 12/3 GFCI

135AD050802

OTHER TYPES  
AVAILABLE



## 2' 20A LIGHTED END GENERATOR W ADAPTER

10/3, STW, converts TT-30 plug  
into (3) 5-20 receptacles

1350400215



**VOLTEC**  
POWER & LIGHTING

## 6500W INDUSTRIAL WHEELED GENERATOR

7,000 watts of start-up power, recoil  
starter, GFCI protected outlets

475EB6500X1AN



**HONDA**

## 5000W INDUSTRIAL WHEELED GENERATOR

7,000 watts of start up power for 10 seconds,  
recoil starter, GFCI protected outlets

475EB5000XK3AN



## 3200W INVERTER GENERATOR WITH CO-MINDER

58 dBA @ rated load, 54 dBA @ 1/4 load

475EU3200IAC



## 5 GAL. TYPE I SAFETY GAS CAN

Self-closing and self-venting lid  
controls vapors and spills

1047150110

OTHER TYPES  
AND SIZES  
AVAILABLE



**Justrite**



# TEN ELEMENTS OF AN EFFECTIVE STORMWATER SITE PLAN

*Plan review staff should check site plans to ensure they address common, critical elements. The following points (adapted from Brown and Caraco, 1997) present a comprehensive approach to addressing construction site runoff.*

## 1 MINIMIZE CLEARING AND GRADING

Construction site operators should take all measures possible to avoid clearing or grading stream buffers, forest conservation areas, wetlands, springs and seeps, highly erodible soils, steep slopes, environmental features, and stormwater infiltration areas. In addition, site fingerprinting should be employed and limits of disturbance (LOD) should be mapped, clearly delineated on site with flags, and conveyed to personnel.

## 2 PROTECT WATERWAYS

Construction site operators should identify bodies of water on site and adjacent to the site. If construction activities occur near a waterbody, clearing/grading activities should be minimal and silt fencing and/or earthen dikes should be installed.

## 3 PHASE CONSTRUCTION

Prior to construction initiation, activities should be broken into phases. Grading activities should be limited to the phase immediately under construction to decrease the time soil is exposed, decreasing the potential for erosion. Additional phases should begin only when the last phase is near completion, and preferably exposed soil has been stabilized. Construction scheduling should facilitate installation of erosion and sediment control measures prior to construction start, detail time limits for soil stabilization after grading occurs, and schedule BMP maintenance.

## 4 IMMEDIATELY STABILIZE EXPOSED SOILS

Exposed soils should be stabilized within two weeks of the onset of exposure. The long-term goal is to establish permanent vegetation after each phase of construction; however, mulch, hydroseeding, or other means of soil coverage may protect exposed soil while facilitating vegetation growth. The stormwater site plan should detail appropriate plant species to be seeded as well as weather and climatic conditions necessary for germination and successful vegetation establishment.

## 5 PROTECT STEEP SLOPES AND CUTS

Cutting and grading of steep slopes (>15%) should be avoided wherever possible. If a steep slope exists, all water flowing onto the slope should be redirected with diversions or a slope drain. Silt fencing at the top and toe of the slope must be anchored well, although this measure may not provide adequate protection by itself. On steep slopes, jute netting and erosion control blankets (geotextiles) should be used in conjunction with seeding or mulching, as seeding alone may not be effective.

## 6 INSTALL PERIMETER CONTROLS

Silt fence should be properly installed around the perimeter of the construction site. A fiber roll on the inside (site-facing) of the fence works to provide additional filtration. In areas of heavy flows or breach concern, a properly sized earthen dike with a stabilized outlet should be created. In addition, catch basin inlets receiving stormwater flows must be protected with adequate inlet controls.

## 7 ADVANCED SEDIMENT SETTLING CONTROLS

Sediment Basins should be created where space is available; however, discharge from basins must be non-turbid. The use of skimmers and multiple cell construction of basins assist in sediment drop-out.

## 8 CERTIFY AND TRAIN CONTRACTORS

Contractors and/or construction staff should be trained in erosion and sediment control features. Meetings and site inspections by municipal staff provide opportunities for discussion of effective BMPs with site staff. Inspectors should make a strong commitment to contractor education to develop a constructive and responsive relationship.

## 9 CONTROL WASTE AT THE SITE

The site plan should describe the type of construction site waste found at the site, such as discarded building materials, concrete truck washout, chemicals, litter, and sanitary waste, and how that waste will be controlled to minimize adverse impacts to water quality. For example, concrete washout and trash storage areas should be clearly labeled on the plan and should be located away from waterbodies and catch basin inlets.

## 10 INSPECT AND MAINTAIN BMPs

Each stormwater site plan should clearly describe the construction site operator's BMP inspection and maintenance, including who will inspect the site and how often. Ideally, an example inspection form should be included with the plan. Inspections should occur at a regular interval and should also occur immediately before and after rain events. The plan should also describe how BMPs will be maintained.

# STORMWATER POLLUTANTS

Any substance that can render water harmful to people, fish, or wildlife or impair recreation or other beneficial uses of water is considered a pollutant.



## 1 OILS & GREASES

- A common component of stormwater runoff, primarily because there are so many common sources:
  - **Streets and highways**
  - **Parking lots**
  - **Food waste storage areas**
  - **Heavy equipment and machinery storage areas**
  - **Areas where pesticides have been applied**
- Can be petroleum-based or food related
- Toxic to aquatic organisms
- Can clog drainage facilities, which leads to increased maintenance costs and potential flooding problems

## 2 TOXIC ORGANIC COMPOUNDS

- Pesticides and PCBs are particularly dangerous in the aquatic environments
- These toxic compounds include phenols, glycol ethers, esters, nitrosamines, and other nitrogen compounds
- Common sources include:
  - **Insecticides**
  - **Herbicides**
  - **Fungicides**
  - **Wood Preservatives**
  - **Antifreeze**
  - **Dry cleaning chemicals**
  - **Cleansers**
  - **Agricultural lands**
  - **Construction Sites**
  - **Parks**
  - **Golf courses**
  - **Residential lawns**

## 3 SEDIMENTS

- The most common pollutant in storm water runoff by volume and weight
- Excess concentrations turn stream and lake water cloudy, smothering fish and plant life, trout and salmon eggs, and destroy insect habitats
- Other pollutants can attach to soil particles, including oils, metals, bacteria, and nutrients
- Common sources of sediments in runoff include:
  - **Agricultural land erosion**
  - **Road salts and sands**
  - **Pressure washing and sandblasting fallout**
  - **Equipment and vehicle dirt**
  - **Paved areas (parking lots, driveways, etc.)**

## 4 FECAL COLIFORM BACTERIA

- May indicate the presence of pathogenic bacteria and viruses when found in water
- Can be a problem for treating drinking water and limit recreational use of a water body
- Common sources include:
  - **Pet and other animal wastes**
  - **Agricultural areas and Hobby farms**
  - **Fertilizers**

## 5 OXYGEN-DEMANDING SUBSTANCES

- Use dissolved oxygen in water when they decay or chemically react
- Slow-moving waters are particularly susceptible because their aeration by turbulence is lacking, and is often very severe after a storm
- Common oxygen-demanding substances include:
  - **Plant debris**
  - **Food waste**
  - **Some chemical wastes**
  - **Animal waste**

## 6 NUTRIENTS

- Excess levels can over-stimulate algae and other plant growth, resulting in unpleasant odors, unsightly surface scums, and lower dissolved oxygen levels, especially in slow-moving waters (lakes, sluggish streams, etc.)
- Algae can cause taste and odor problems in drinking water, foul-smelling odors in ponds and lakes, and clog water intakes, drains, and pipes
- Common nutrients include:
  - **Fertilizers and animal wastes**
  - **Failing septic systems**
  - **Detergents**
  - **Road salts and sands**
  - **Automobile emissions**
  - **Organic matter (lawn clippings, leaves, etc.)**

## 7 METALS

- Lead, copper, zinc, cadmium and other heavy metals commonly found in urban runoff contaminate surface, ground, and drinking waters, and concentrate in bottom sediments, which pose as health problems for fish and other animals
- Common sources of heavy metals in runoff include:
  - **Industrial areas**
  - **Scrap yards**
  - **Paints and pesticides**
  - **Fallout from automobile emissions**

## 8 PH VALUE

- Very acidic or very basic waters are corrosive to metal surfaces and can cause biological problems for aquatic organisms and fish
- Desirable pH is a range of 6 to 8 for most bodies of water
- Common sources include:
  - **Industrial processes**
  - **Metal plating solutions**
  - **Acidic printing and graphic art chemicals**
  - **Cement**
  - **Chemical cleaners**



## TAKE ACTION BEFORE THE STORM HITS

There are many things we can do to prepare for hurricanes well in advance of an actual storm. From stormwater management best practices and proper chemical storage, to making an effective storm plan, including steps for returning to work after a hurricane has hit your jobsite. Learn how to prepare for a hurricane-including torrential rainfall, flooding, and more-with our hurricane preparation guide. *Scan the QR code to read more.*



### 38" X 100' BUILDER BOARD WITH LIQUID SHIELD

*Heavy-duty, temporary floor protection*



PRODUCT NO.	DESCRIPTION
213BLD38100	38" X 100' BUILDER BOARD
213BLD072	3" X 180' TAPE FOR BUILDER BOARD

### ELECTRICAL PERSONAL LOCKOUT KITS

**Includes:** (1) No. 410 red Zenex™ padlock, (1) 7C5RED circuit breaker padlock, (1) 420 lockout hasp, (2) 491B grip tight lockout for wide or tall breaker toggles, (2) 493B grip tight devices for standard size breaker toggles, 1 bag (12/pack) of 497A Danger Do Not Operate lockout tags

1121456E410

**Master Lock**



## Plywood, Nails & Stakes Available

*Scan the QR Code or Visit Your Local White Cap*



### DT11 HEAVY DUTY DUCT TAPE

48 mm x 55 m (1.88" x 60.1 yds.), 11 mil, silver

121DT11



### POLYETHYLENE SHEETING

*Lowest cost all-purpose protection against water vapor and foreign matter*



OTHER SIZES AND TYPES AVAILABLE

PRODUCT NO.	SIZE
432420	20' X 100', 4 MIL
432620	20' X 100', 6 MIL

### 35' FATMAX™ TAPE

*Heat-treated spring for longer life*

29133735



### BLUE PLASTIC TARPS

*Perfect for protecting cement, or other bagged products, from the elements*



OTHER SIZES AVAILABLE

PRODUCT NO.	SIZE
104TARP2040	20' X 40'
104TARP4060	40' X 60'



# TAKE ACTION

## 36" X 100' NON-WOVEN SILT FENCE

*Designed for efficient control of sediment run-off from construction sites*

15710517



OTHER TYPES AVAILABLE

## 8" X 200' FILTREXX® SILTBOX™

*Stops silt and sediment leaving your jobsite and helps keep you in compliance*

262SILTP0820



OTHER SIZES AVAILABLE

**FILTREXX**  
Advanced Tuber Filers

## 3' X 4' YELLOWJACKET™ DRAIN INLET FILTER

*Inlet sediment filter*



262YJ34



OTHER SIZES AVAILABLE

## RICE STRAW FIBER ROLLS (WATTLES)

*8" x 25'*

262FR925



OTHER SIZES & TYPES AVAILABLE

## SAND BAGS

*14" x 26"*

262SB1



FILLED BAGS ALSO AVAILABLE

## CURB INLET FILTER

*5" x 6'*

262SSCIF96



## 10' X 10' SLING TARP

*Heavy duty multi-use tarp for lifting washouts, debris cleanup and product transport*



547910000500



## 6' X 6' ULTRA-DEWATERING BAG®

*Contain sediment and oil pumped out during dewatering operations*

44797240S



OTHER SIZES AVAILABLE

## 6' X 9' DEWATERING BAG

*Filters water diluted by soils and sediment with ease*

262DWB69



OTHER SIZES AVAILABLE





# CLEAN-UP & RECOVERY



7

## REINFORCED "DANGER" BARRICADE TAPE

3" x 500', 7 mil.



PRODUCT NO.	DESCRIPTION
173RYCT	3" X 500' YELLOW CAUTION TAPE
173RRDT	3" X 500' RED DANGER TAPE

## MAXIFLEX<sup>®</sup> CUT<sup>™</sup> ENGINEERED YARN CUT RESISTANT GLOVE BY ATG<sup>®</sup>

15 gauge seamless knit engineered yarn glove with premium nitrile coated microfoam grip on palm & fingers

223348743L

AVAILABLE IN  
S - XXL



## BOSS<sup>®</sup> 16" BLACK PVC PLAIN TOE BOOT

Up to 25% lighter than classic PVC boots

22638080010



AVAILABLE IN  
SIZES 8 - 14

## BARRICADE TAPE

3" x 1000' rolls



PRODUCT NO.	DESCRIPTION
123BT1000C	3" X 1000' YELLOW CAUTION TAPE
123BT1000D	3" X 1000' RED DANGER TAPE

## KEYSTONE THUMB STANDARD GRAIN COWHIDE DRIVER GLOVES

Durable and flexible construction

444BR11263

AVAILABLE IN  
S - XXL



## CHESAPEAKE 16" PVC BOOTS

Lightweight modern design 25% lighter than classic PVC boots

225867770010

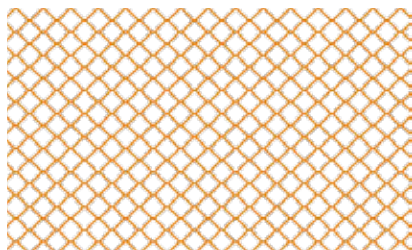


AVAILABLE IN  
SIZES 8 - 14

## ORANGE HEAVY DIAMOND BARRIER SAFETY FENCE

4' x 100' high-density polyethylene warning fence

104SFORG4100



## INTRUDER<sup>®</sup> SAFETY GLASSES

100% polycarbonate economical spectacles

121S4110S



OTHER COLORS AND  
STYLES AVAILABLE

## 17" HAZMAX SLICKER OVERBOOT

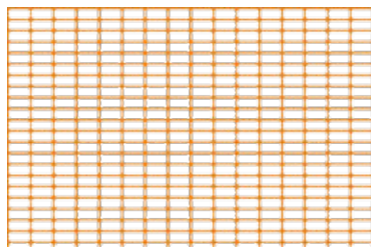
Providing a high degree of chemical resistance

22688050SZ10

## ORANGE HIGH VISIBILITY BARRIER SAFETY FENCE

4' x 100' economical high-density polyethylene warning fence

104WBORG4100



## 6500 HALF FACEPIECE REUSABLE RESPIRATOR

Rugged comfort quick latch

1216502QL



OTHER SIZES  
AVAILABLE



AVAILABLE IN  
SIZES 8 - 14



# CLEAN-UP & RECOVERY



## 2" SUBMERSIBLE PUMP

73 gpm, 37' head

176ST2037F



## 2" SUBMERSIBLE TRASH PUMP

79 gpm, 40' head, handles 1" diameter solids

176ST2040T



## 14-GALLON NXT WET/DRY VAC WITH CART

**RIDGID**

6.0 peak horsepower

**Includes:** 2 extension wands, (1) 2-1/2" x 8' premium locking pro hose, (1) utility nozzle, (1) wet nozzle, (1) crevice tool, (1) car nozzle, (1) fine dust filter, owners manual

15362718



## 42" HEAVY-DUTY INDUSTRIAL BELT-DRIVE BARREL FAN



1 hp, 2-speeds, 14,800/12,000 cfm, 120V/60Hz, 5.8 amps

220MHD42BDF



## SUCTION AND DISCHARGE HOSES

Reinforced with woven synthetic fiber



OTHER SIZES AVAILABLE

PRODUCT NO.	DESCRIPTION	SIZE
107SH200	SUCTION HOSE	2" X 20'
318DH200	PVC DISCHARGE HOSE	2" X 50'

## MASTER® 36" DIRECT-DRIVE BARREL FAN

1/2 hp, 2-speeds, 13,000/9,500 cfm, 120V/60Hz, 3.6 amps

220MHD36D



## MASTER® 20" HIGH VELOCITY FLOOR FAN

1/5 hp, 3-speeds, 4,800/4,200/3,600 cfm, 120V/60Hz, 2.0 amps

220MAC20F



## 2" CAMLOCK™ ALUMINUM M-X-F NPT 2" ADAPTER

Typically used with Type D couplers, but can be used with Type B and C couplers as well as DC (Dust Cap) of identical size

28820AA



OTHER SIZES AVAILABLE

## 2" METAL SUCTION HOSE STRAINER

318RHS25



OTHER SIZES AVAILABLE

## 1610RV 16-GALLON STAINLESS STEEL WET/DRY VAC WITH CART

12 amp, 6.5 hp

**Includes:** 2 Extension Wands, 1-7/8" x 8' Premium Locking Pro Hose, Utility Nozzle, Wet Nozzle, Crevice Tool, Car Nozzle, and Find Dust Filter

15350353







# CLEAN-UP & RECOVERY



9

## 7-1/4" 24T FRAMING BLADE

*Ideal for High quality crosscuts and rip cuts in wood, plywood & melamine*



297D0724A



OTHER SIZES AVAILABLE

## 9" CARBIDE-TIPPED PRUNING BLADES

*3 tpi, 3 per pack*

297DS0903CP3



OTHER SIZES AVAILABLE

## 9" 8/10TPI DEMO DEMON™ RECIPROCATING SAW BLADE

*For metal and metal demolition, 25-pack*

297DS0908B25



OTHER SIZES AVAILABLE

## 12" 6T NAIL WOOD RECIPROCATING BLADE

173372156BB



## 18V X2 (36V) LXT™ LITHIUM-ION BL™ CORDLESS 14" CHAIN SAW KIT (5.0AH)



*3,940 fpm chain speed, 3/8" chain pitch*

**Includes:** (2) 18V LXT™ lithium-ion 5.0Ah batteries, (1) 18V LXT™ lithium-ion dual port charger, (1) 14" guide bar 3/8"-.043", (1) chain, (1) guide bar cover

140XCU03PT



## 455 RANCHER 20" CHAINSAW

219970613250



## 20V MAX\* XR® COMPACT 12" CORDLESS CHAINSAW

*Up to 90 cuts per charge in 4x4 pressure treated wood*

**Includes:** (1) hard bar cover

324DCCS620B



BATTERY AND CHARGER SOLD SEPARATELY

PRODUCT NO.	DESCRIPTION
324DCB2052	20V MAX* 5.0 AH BATTERY (2-PACK)
324DCB1104	12V MAX*/20V MAX*/FLEXVOLT® 4 AMP CHARGER

## FLEXVOLT® 60V MAX\* BRUSHLESS CHAINSAW KIT



*70 cuts per charge on 6" x 6" pressure treated pine wood*

**Includes:** (1) 20V/60V MAX\* 3.0ah battery pack, (1) charger, (1) hard bar cover

324DCCS670X1



## FLEXVOLT® 60V MAX\* BRUSHLESS 7-1/4" CIRCULAR SAW WITH BRAKE KIT

*2-9/16" depth of cut @ 90° (2" @ 45°), 57° maximum bevel capacity*

**Includes:** (2) FLEXVOLT® 9.0Ah batteries, (1) charger, (1) blade, (1) blade wrench, kit bag

324DCSS578X2



## 20V MAX\* LI-ION RECIPROCATING SAW 0-3000 SPM and a 1-1/8" stroke length

324DCS380B



BATTERY AND CHARGER SOLD SEPARATELY

PRODUCT NO.	DESCRIPTION
324DCB2052	20V MAX* 5.0 AH BATTERY (2-PACK)
324DCB1104	12V MAX*/20V MAX*/FLEXVOLT® 4 AMP CHARGER

## 7-1/4" SKILSAW ALUMINUM WORM DRIVE



*15 amps, lightweight construction*

**Includes:** 7-1/4" worm drive SKILSAW, 24-tooth Diablo® carbide tipped blade, wrench

106SPT77W22



PRODUCT NO.	DESCRIPTION
10680111	8 OZ. SKIL SAW OIL

## SAWZALL® RECIPROCATING SAW



*12 amps, 0-3,000 spm, 3/4" stroke length*

**Includes:** Carrying case

131650931





# CLEAN-UP & RECOVERY



## S300 DURALITE™ 16 GA. SHOVEL

With 44" precision lathe-turned hardwood handle



PRODUCT NO.	DESCRIPTION
10249132	SQUARE POINT
10249130	ROUND POINT

## ALUMINUM SCOOP WITH D-GRIP

Ideal for transport of all materials



PRODUCT NO.	DESCRIPTION
1391670900	#10 ALUMINUM SCOOP
444BR12632	24" ALUMINUM SCOOP

## D-HANDLE SHOVELS

Open-back, 16-gauge blade, with 24" Ergo D-Handle



PRODUCT NO.	DESCRIPTION
444BR12629	SQUARE POINT
444BR12630	ROUND POINT

## 1/2 CU. YD. CONSTRUCTION-DUTY TILT TRUCK

850 lb. max load capacity

592RMTTCD504



## 6 CU. FT. FLAT-FREE WHEELBARROW

Bolted back brace for increased leg strength

444BR12635



## 55 GAL. INJECTION-MOLDED UTILITY TRASH CAN

Professional-grade plastic made to resist denting and bending, lid and dolly sold separately



OTHER SIZES AVAILABLE, LID & DOLLY SOLD SEPARATELY

PRODUCT NO.	DESCRIPTION
592TCU55	55 GAL. GRAY UTILITY TRASH CAN
592TCU55GLIDD	55 GAL UTILITY TRASH CAN LID
592TCDOLLY2	BLACK STANDARD DUTY UTILITY TRASH CAN DOLLY

## 55 GAL. HEAVY-DUTY CONTRACTOR BAGS

Great for jobsite clean up, 20 per box

444BR12610



42 GAL. ALSO AVAILABLE



## 24W AC PORTABLE LED WORK LIGHT

2,200 lumens, 3' 18/3 AWG SJTW cord, 5-15 plug

1350800724



## M18™ RADIUS™ LED COMPACT SITE LIGHT

18V Lighting for task, area and overhead

Includes: Security cable

131214520



BATTERY AND CHARGER SOLD SEPARATELY

## USB RECHARGEABLE HARD HAT HEADLAMP

Delivers 475 lumens of TRUEVIEW™ high definition output

131211121



Pricing subject to change. Contact your White Cap Account Manager for current pricing. White Cap is not responsible for errors or omissions. Pictures may not represent advertised items. White Cap reserves the right of resale and the amount of items sold.





# CLEAN-UP & RECOVERY



11

## 24" GARAGE BROOM

*Coarse brown polystyrene bristles*

**Includes:** Flexsweep connector and 60" handle (assembled)



OTHER TYPES AVAILABLE

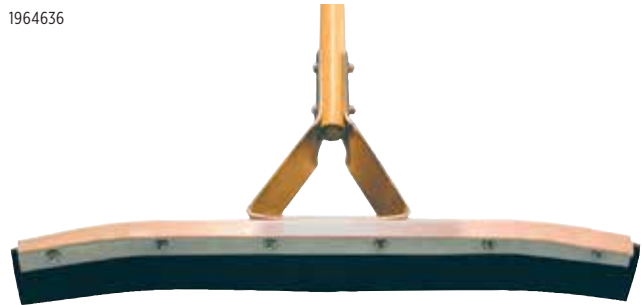
PRODUCT NO.	DESCRIPTION
444BR11148	24" GRAY FINE POLYSTYRENE BROOM
444BR11147	24" BLUE HD POLYSTYRENE STREET BROOM

## CURVED RUBBER SQUEEGEE WITH HANDLE

*Frame made of 1" angle aluminum*



1964636



## 25 LB. COLOR MIXED MATERIAL RAGS

*A good knit rag where cost is a prime consideration*

312303W25



## 12" INDUSTRIAL DUST PAN

*Resists rust and corrosion*

2156



17" ALSO AVAILABLE

## PLASTIC MOP BUCKET COMBO WITH WRINGER

*35 quart*

196656C



## 25 LB. WHITE COTTON RAGS

*Ideal for heavy industrial use*

312228W50



## 54" JANITOR QUICK CHANGE MOP HANDLE

*Heavily zinc-plated steel construction*

19691



## 24 OUNCE COTTON MOP HEAD

*4-ply highly absorbent, long wearing yarns*

2466309



## 1 GAL. HEAVY DUTY CITRUS DEGREASER

*Real citrus solvents power through grease, dirt, and grime*



288R07701



## 5 GAL CLEAR BUCKET

*12" width, 14.5" height, padded comfort handle, graduated fill lines*  
**Includes:** Bucket only

196RG5600WC



## 5 GAL HI-VIS BUCKET

*12" width, 14.5" height, metal handle with plastic grip*  
**Includes:** Bucket only



196RG5500





# CHECKLIST

## PREPARE

- ☐ First Aid Kits
- ☐ Rain Gear
- ☐ Water and Hydration
- ☐ Coolers and Accessories
- ☐ Flashlights
- ☐ Batteries
- ☐ Bolt Cutters, Utility Knives and Multi-Tools
- ☐ Generators
- ☐ Extension Cords and Adapters
- ☐ Safety Gas Cans
- ☐ Jobsite Radios

## TAKE ACTION

- ☐ Padlocks, Cable Locks and Lockout Stations
- ☐ Tapes and Glues
- ☐ Plywood
- ☐ Measuring Tapes
- ☐ Floor Protection
- ☐ Tarps
- ☐ Plastic Sheeting
- ☐ Silt Fences
- ☐ SiltSoxx
- ☐ Sand Bags
- ☐ Dewatering Bags
- ☐ Wattles

## JOBSITE CLEANUP & RECOVERY

- ☐ Masks
- ☐ Safety Glasses
- ☐ Gloves
- ☐ Footwear and Foot Protection
- ☐ Safety Fencing and Barriers
- ☐ Safety Signs
- ☐ Pumps and Accessories
- ☐ Wet/Dry Vac
- ☐ Fans and Blowers
- ☐ Chain Saws and Accessories
- ☐ Circular Saws and Blades
- ☐ Reciprocating Saws
- ☐ Shovels
- ☐ Lighting
- ☐ Trash Cans and Bags
- ☐ Wheelbarrows, Tilt Trucks, and Utility Carts
- ☐ Mops, Brooms and Buckets
- ☐ Cleaning Supplies and General Purpose Cleaners